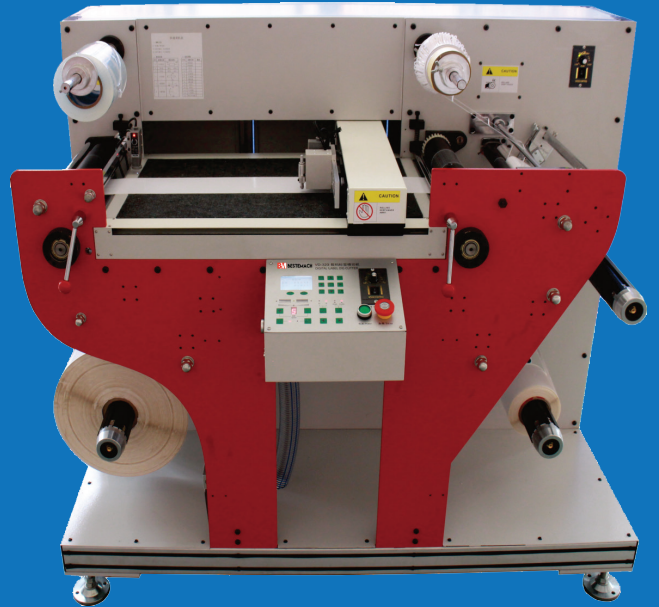


# BESTEMACH

# BM-320

## DIGITAL LABEL DIE-CUTTER



### Fast, Easy & Economical Digital Label Die Cut Finishing Machine

#### **產品特色** **Features**

- All in one integrated laminating, die cut, slitting, rewinding and waste removal system
- Robust and compact design ideal for production of high quality labels for small and medium size prints
- No expensive dies. Cost effective easy to operate
- Supports various media substrates such as PP, PET, coated paper.
- OEM Manufacturer for known brand in Asia, Japan, and Europe

#### **產品規格** **Specification**

### BM320

Cutting Media width	40 - 320 mm
Max cutting width	300mm
Label length	Min. 10mm   Max 400 - 1200 mm thru segment cut
Media thickness	Min. 0.05mm   Max 0.33mm
Die cutting technology	Tungsten steel rotary blade
Cutting precision	0.1mm (duplicate)
Cutting tracking	Manually, single mark or double mark
Cutting blade	Standard 2 maximum 4 blades
Cutting speed	Max. 5m/min (depends on label size)
Slitting blades	Standard 4 max. 15
Slitting speed	maximum 60m/min.
Slitting precision	0.2mm
Slitting width	10 - 320mm
Unwinder	Max diameter 450mm
Rewinder	2 standard rewinder
Waste matrix rewind	1 waste removal rewinder
Lamination	Cold lamination unit
Dimensions	W 158cm x D 90cm x H 136 cm
Weight	Approx. 520kg
Power	100 - 240VAC   1000W
Suitable for media	Adhesive labels, PP, Plastic film, PET, PVC, White card paper, Art paper and other soft media
Option	Laminating liner removal module

Distributed by:



Address: Suite 501 N State Centre Bldg.,  
333 Juan Luna St., Binondo, Mla. Philippines 1006  
Website: [www.optusventures.com](http://www.optusventures.com)

Tel: +632 245-9924  
Fax: +632 242-3977  
E-mail Address: [sales@optusventures.com](mailto:sales@optusventures.com)

BESTEMACH BM-320

# **BM** BESTEMACH BM-320 Digital Die Cutter Machine



High speed, easy to operate, multi functional die cutter. Designed for professional label companies

## High Precision Feeding System



Double mark tracking sensor system to guarantee correct media feeding always.

## Cold Lamination Process



Cold laminating unit for quick lamination of the media.

## Digital Die Cutting System



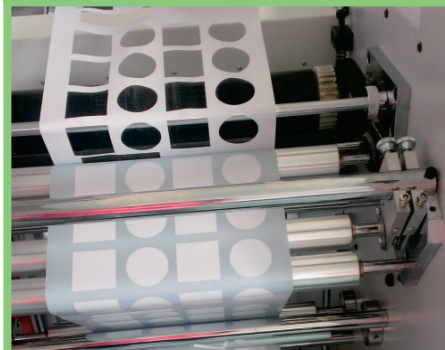
Utilize Servo motor drive with tungsten steel blade running at 2 meter per second speed. Additional two cutting heads can be installed for a maximum of 4 blades to increase speed.

## Slitting System



Utilize rotary slitting blade running 60m per minute maximum 15 blades a time.

## Matrix Removal System



Remove waste continuously with uniform rotating roller